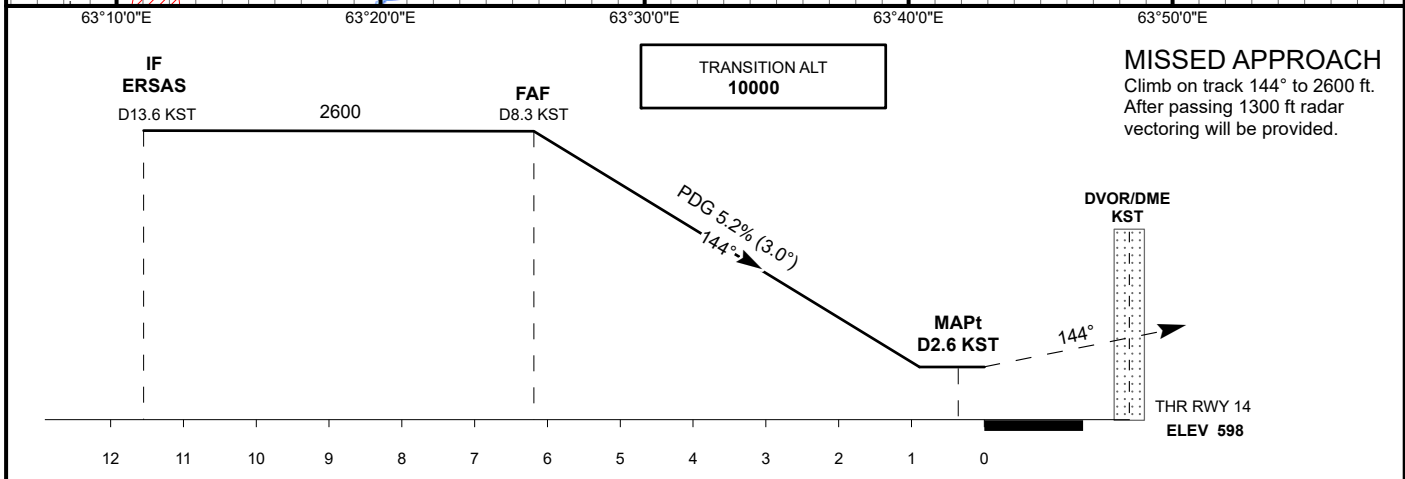
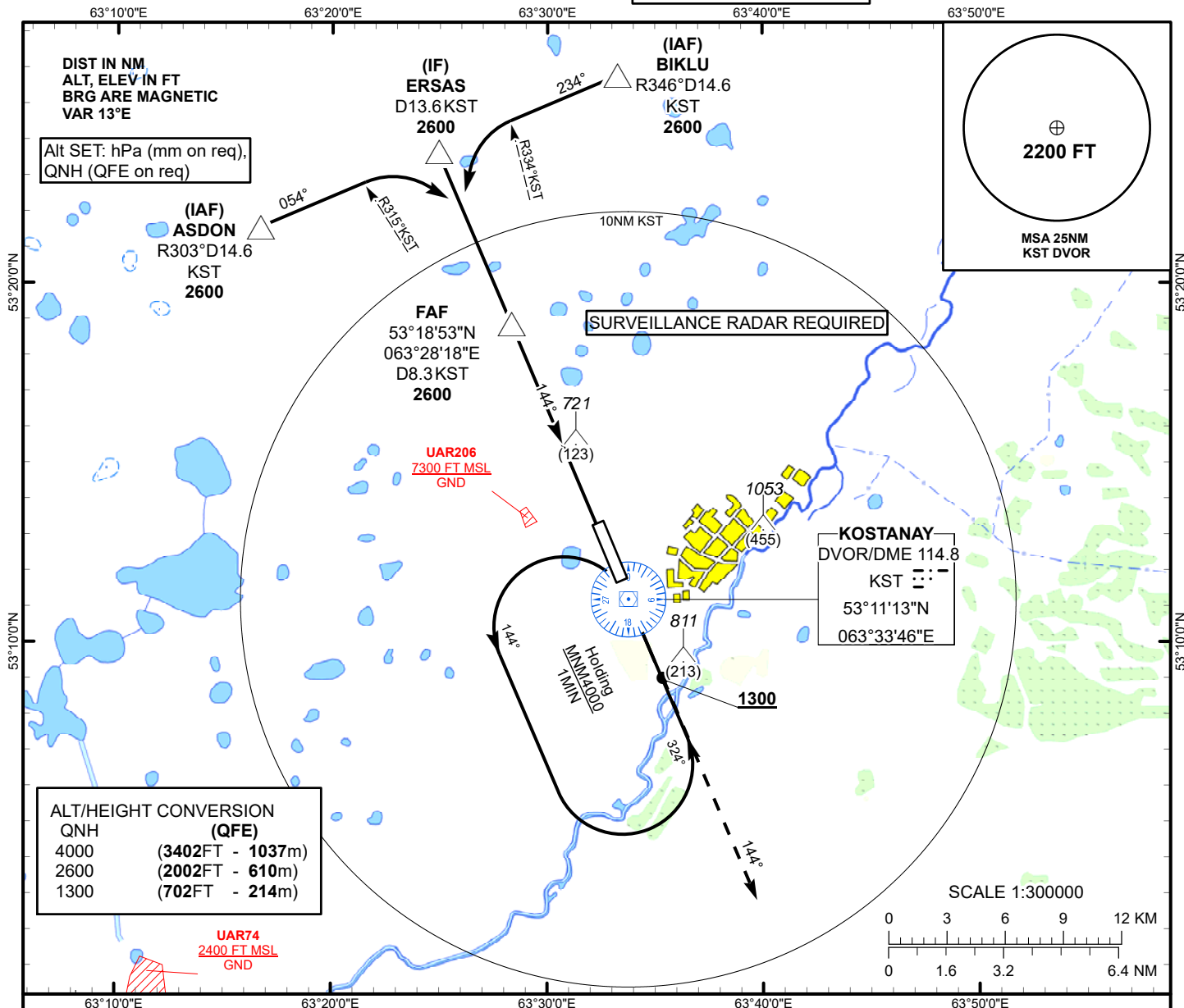


INSTRUMENT
APPROACH
CHART - ICAO

AERODROME ELEV 601 FT
HEIGHTS RELATED TO
THR 14 ELEV 598 FT

KOSTANAY TOWER 129.30
KOSTANAY ATIS (EN) 118.5
KOSTANAY ATIS (RU) 126.8

KOSTANAY
VOR/DME Y
RWY 14



CHANGE: Add ATIS, editorial.

Aircraft Category		A	B	C	D	DIST to THR	NM	6.2	6	5	4	3	2	1
Straight-in Approach OCA/H						DME KST	NM	8.3	8.1	7.1	6.1	5.1	4.1	3.1
	VOR/DME	980(380)	980(380)	980(380)	980(380)	ALTITUDE	FT	2600	2554	2236	1918	1599	1257	938
						HEIGHT	FT	2002	1956	1638	1320	1001	683	364
Aerodrome Operating Minima MDH ft x RVR(CMV)						GS	Kt	80	100	120	140	160	180	
	VOR/DME					FAF-MAPt (5.7NM)	min:sec	4:17	3:25	2:51	2:26	2:08	1:54	
						Desc.Rate(5.2%)	ft/min	420	530	630	740	850	960	

KOSTANAY
VOR/DME Y

AERONAUTICAL DATA TABULATION

VOR approach to RWY14 from ERSAS, ASDON, BIKLU	
Fix/point	Coordinates
DVOR/DME KST	53° 11' 13.0"N 063° 33' 45.5"E
(FAF) D8.3 KST	53° 18' 52.6"N 063° 28' 18.1"E
ERSAS (IF) D13.6 KST	53° 23' 41.3"N 063° 24' 55.2"E
ASDON (IAF) R303°, D14.6 KST	53° 21' 34.2"N 063° 16' 37.5"E
BIKLU (IAF) R346°, D14.6 KST	53° 25' 47.8"N 063° 33' 13.7"E
THR RWY 14	53° 13' 12.74"N 063° 32' 23.66"E
Final approach descent angle is 3°	